

Dear PointCab user,

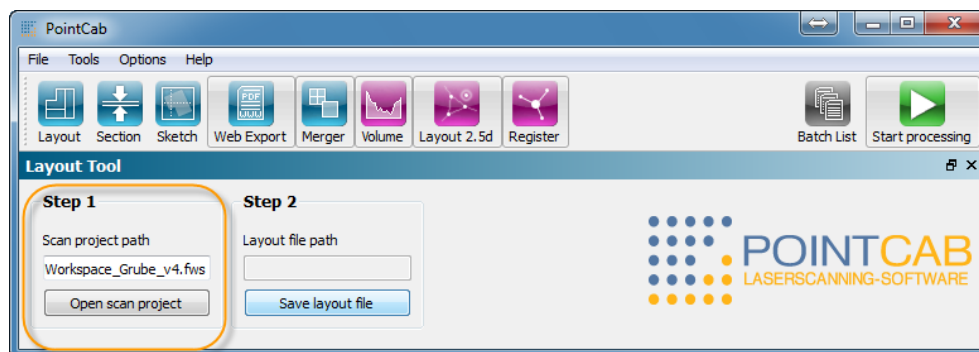
Today, we want to introduce the new PointCab Volume tool and show you how you can calculate a volume out of a point cloud.

The basis for applying the Volume tool is a registered workspace. That means that the laser scanner positions have to be aligned.

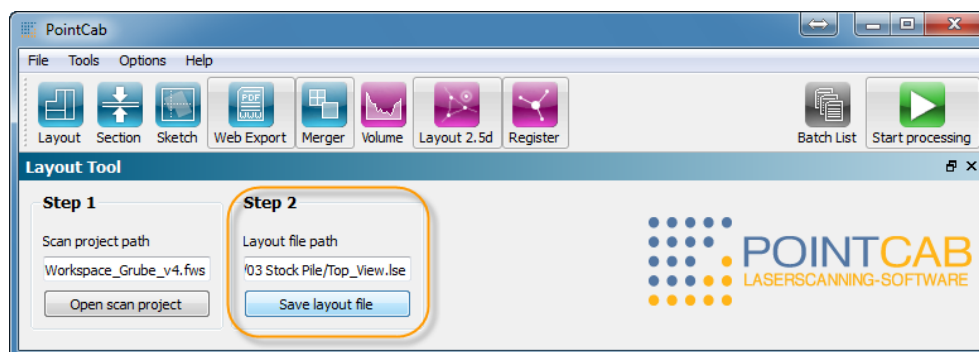
In order to calculate the volume of a determined scan area in PointCab, you have to generate a top view if the scanned area first.

Proceed as follows:

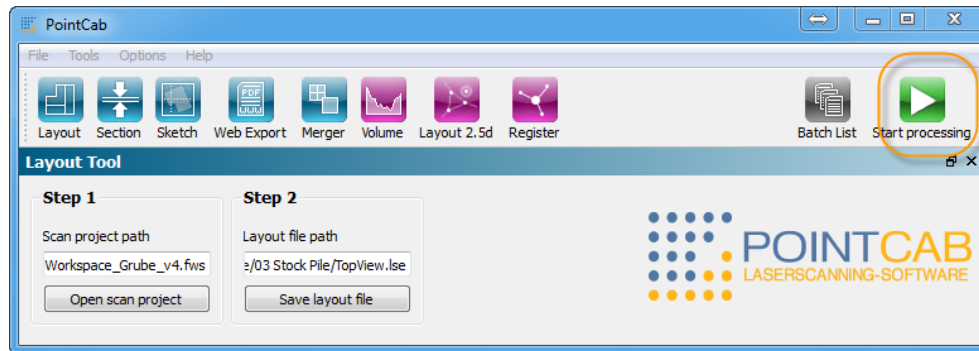
1. Start PointCab.
2. Upload your workspace (fws, lsproj, rsp, ptg, zfs, zprj, ptx, lse) in PointCab in step 1.



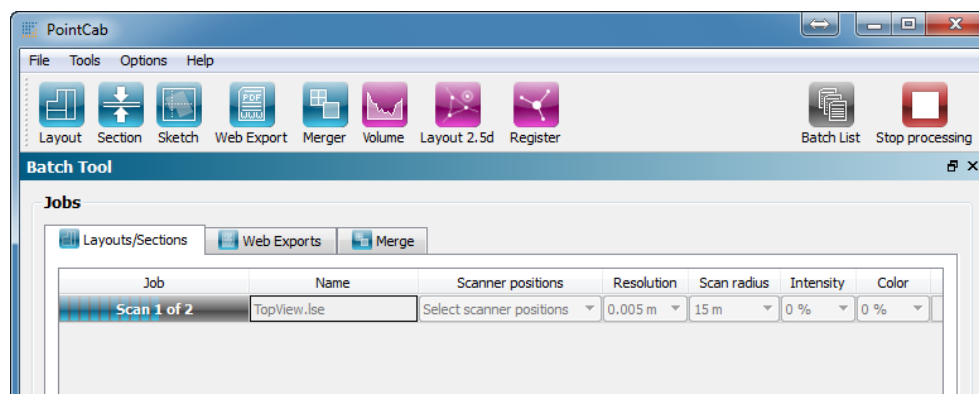
3. Name your layout in step 2 and save the result in the desired directory.



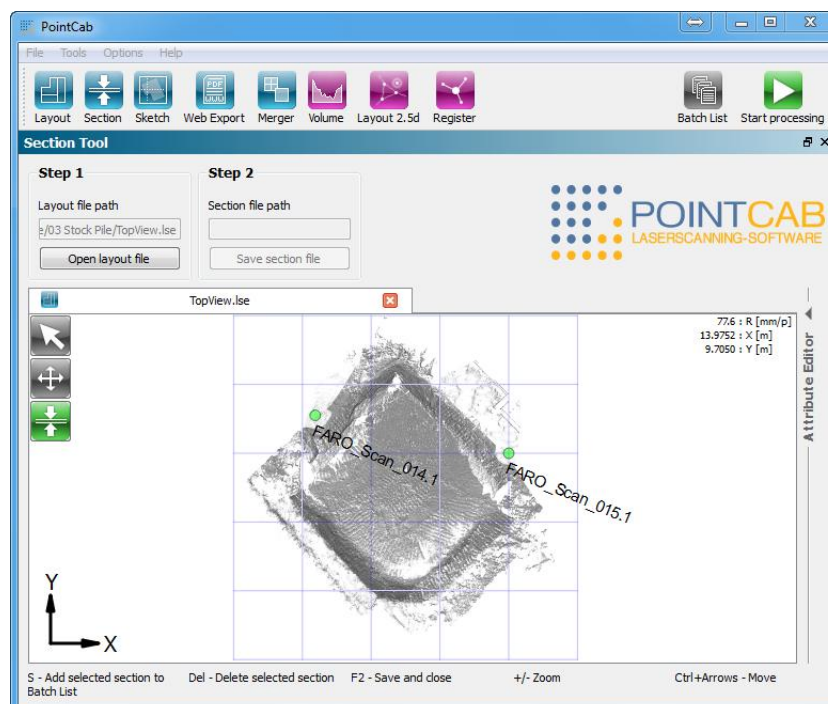
4. Start processing.



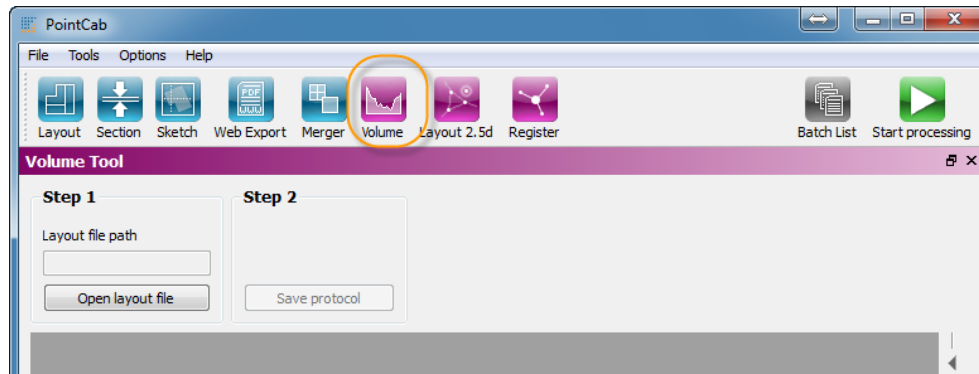
During processing, PointCab displays the progress of the processing in the batch list:



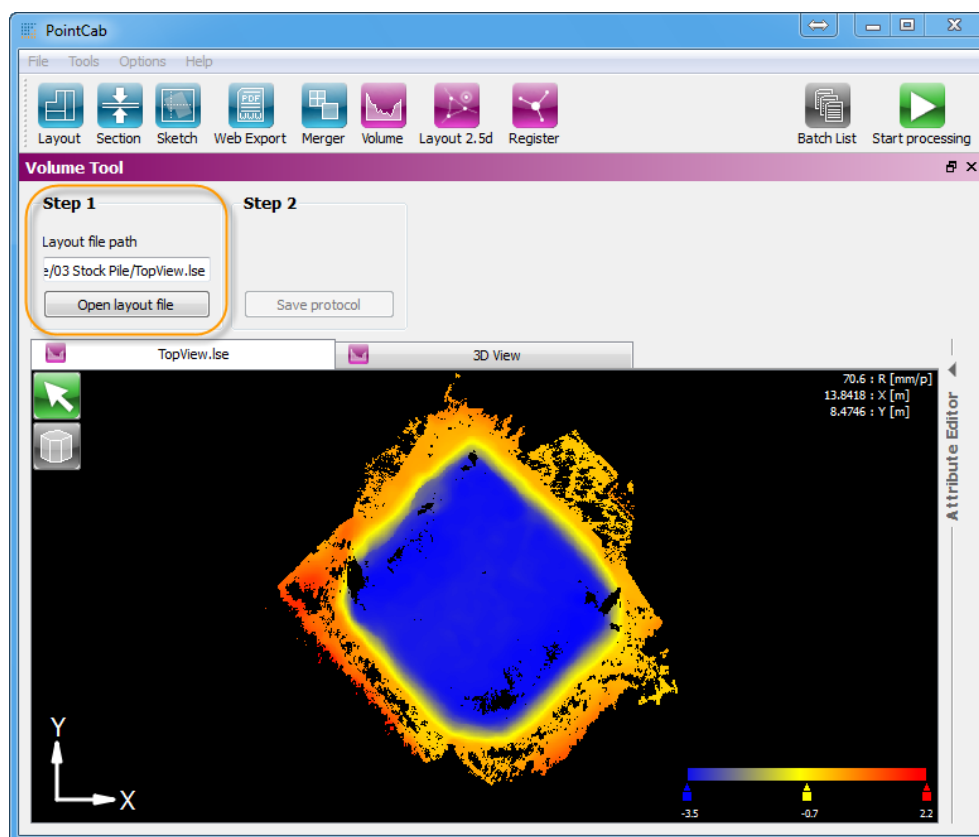
After termination of the processing, the result is displayed in the Section tool:



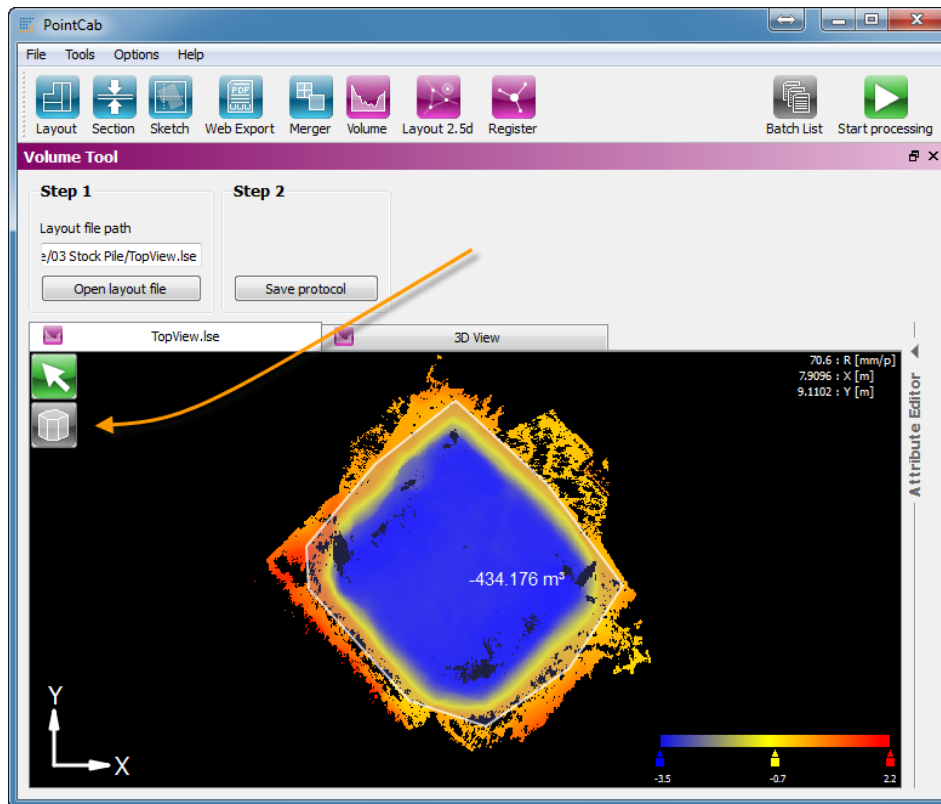
5. Activate the Volume tool.



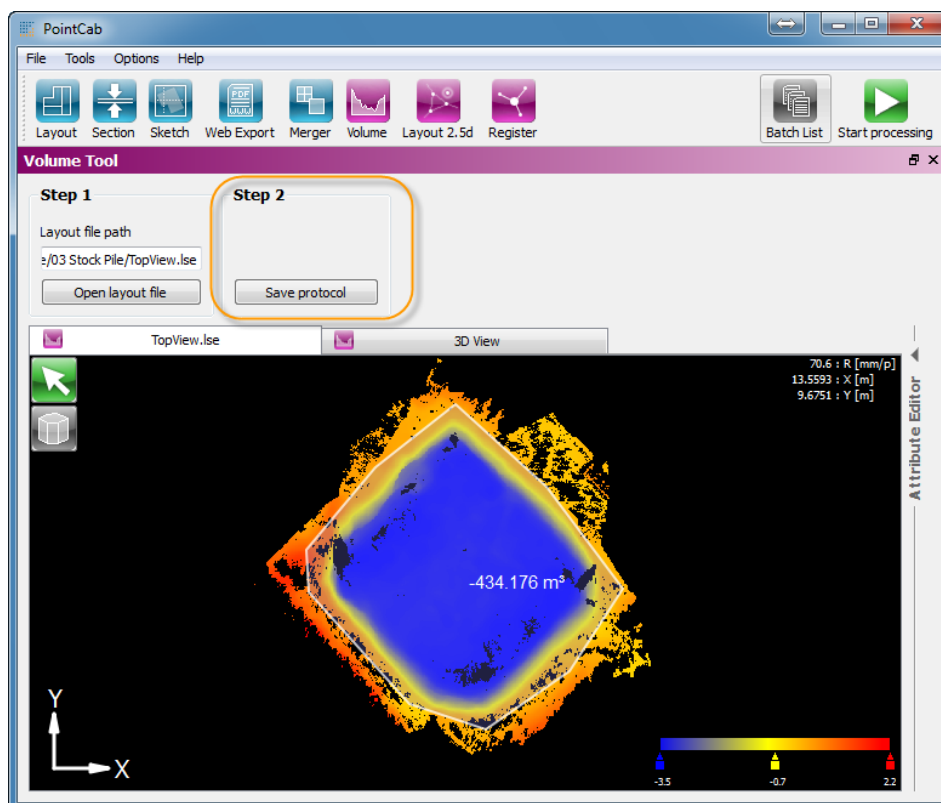
6. Upload the top view in step 1.



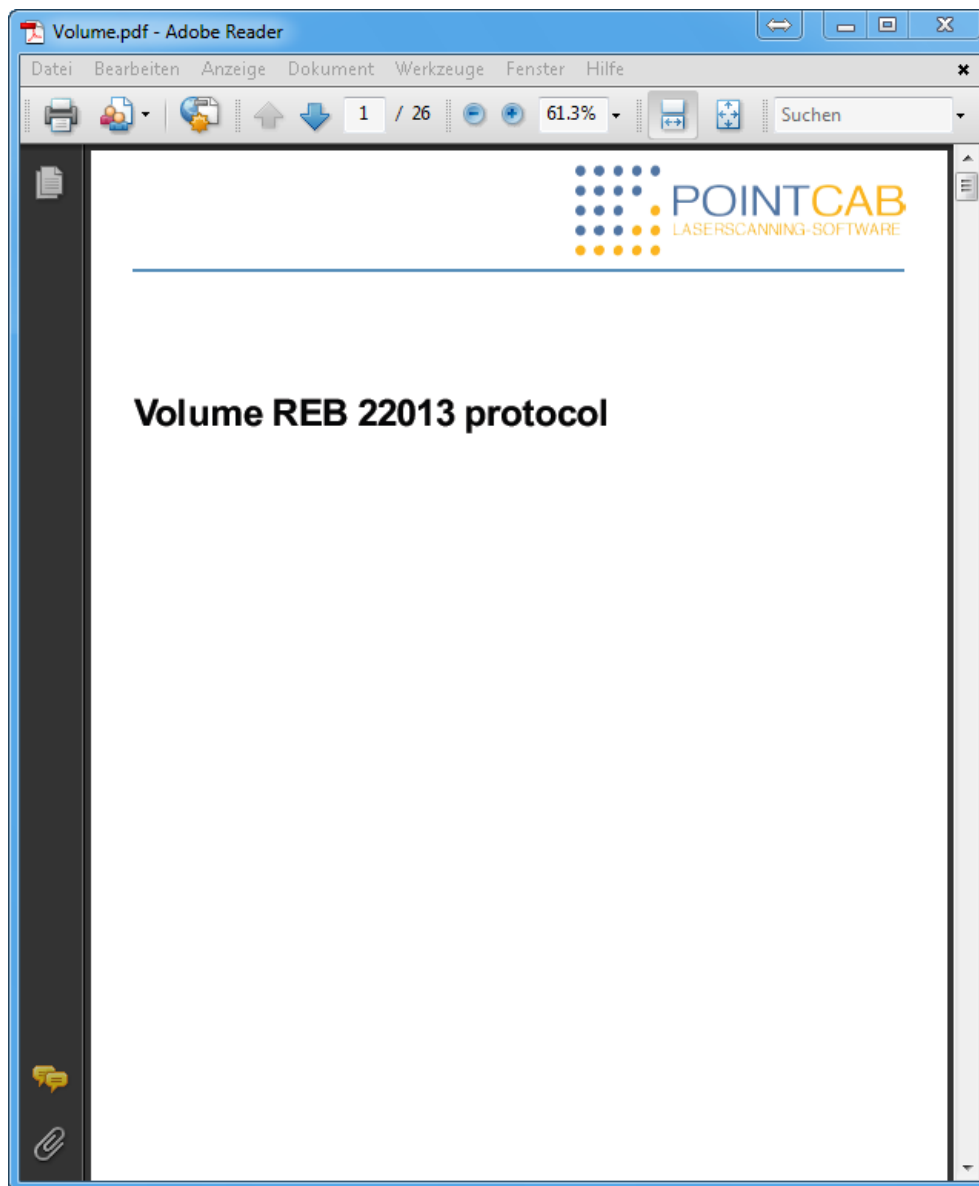
7. Activate the Volume tool and select the area for which the volume shall be calculated. The volume is immediately calculated and displayed.



8. Save the calculation in step 2.

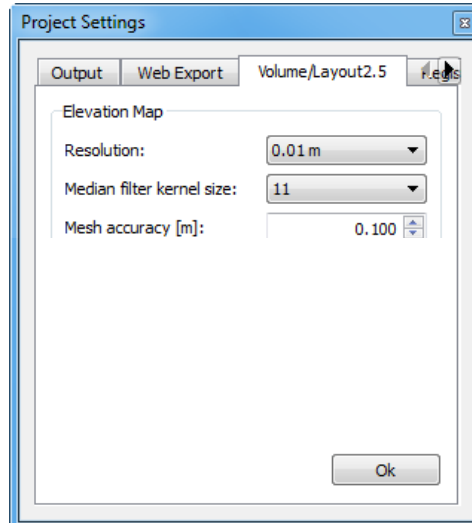


The protocol file conformable to REB22013 is opened as a PDF:



Adjust the calculation settings!

In order to adjust the calculation settings, click on on Options → Settings → Volume/Layout2.5d.



You can change the following settings:

Resolution = Accuracy/detailing of the elevation map

Median filter = Filtering of noise

Mesh accuracy = Accuracy of the elevation map's meshing

You can watch the calculation of a volume in PointCab on our YouTube channel on:

<http://www.youtube.com/watch?v=UhoIMTH4QeA>.

If you have any questions, please don't hesitate to contact us at support@pointcab-software.com.

We wish you still success for working with PointCab.

Best regards



PointCab Product Manager